

YOUR EAGLE™ INFORMATION LABEL

Located on the underside of your **EAGLE™** is the Information Label that identifies your individual device. You will need the three numbers indicated below to register your device. Please make a note of them:



MAC Address (16 characters)





Install Code (16 characters)

Cloud ID (6 characters)

rainforestautomation.com

LED LIGHT INDICATOR KEY

LED lights on the front of the device give you a quick way to check the status of your **EAGLE™**.

INDICATOR LIGHT	 POWER	 ETHERNET	 CLOUD	 ZIGBEE
	Power is on.	IP address obtained.	Connected to Cloud service.	Connected to the electricity meter.

NEED HELP WITH YOUR EAGLE™?

For a full user manual, FAQs, and to contact support:

rainforestautomation.com/eagle_support

V2.3



EAGLE™
Energy Gateway



Quick Start GUIDE



A new way to see your energy

WHAT'S IN THE BOX:

- **EAGLE™** ENERGY MONITOR
- AC POWER ADAPTER
- ETHERNET CABLE

YOU WILL NEED:

- A FREE ETHERNET PORT ON A ROUTER CONNECTED TO THE INTERNET
- A COMPUTER OR DEVICE WITH A WEB BROWSER

GET DIRECT ACCESS TO YOUR REAL-TIME ENERGY INFORMATION IN THREE EASY STEPS:

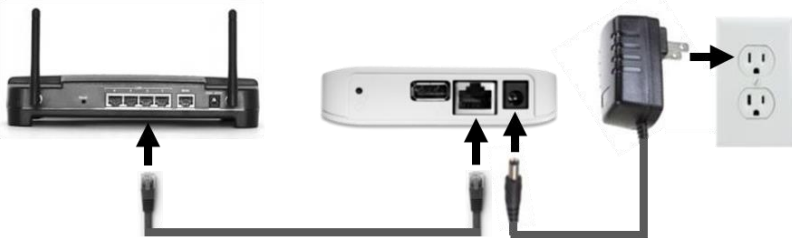
STEP 1: REGISTER WITH YOUR UTILITY

You will need to provide your MAC Address and Install Code from the Information Label on the bottom of your **EAGLE™**. It may take some time for your utility to enable your meter to connect to your device. It is important to wait until this is complete before proceeding to the next step.

STEP 2: PLUG IN YOUR EAGLE™

Connect the Ethernet cable to your router, and plug in the power adapter. **Use only the included adapter to power your EAGLE™. If another adapter is used, it may cause permanent damage to your EAGLE™.**

It should take about two minutes for your **EAGLE™** to boot up.



STEP 3: CONNECT TO THE CLOUD

Create your Cloud Account and connect to your **EAGLE™** to start viewing your energy data.




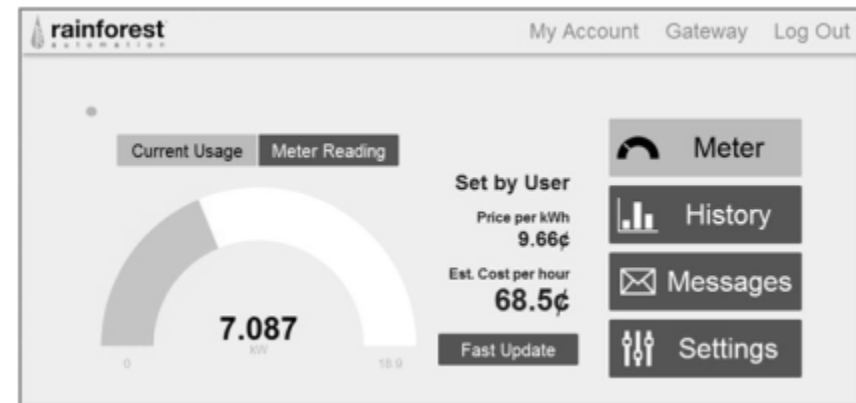
rainforestcloud.com



CONNECTING TO THE CLOUD

Use your Web Browser to go to rainforestcloud.com

- Click on the word “Register” in the lower right corner.
- Fill in the registration information and click the blue “Register” bar.
- Check your email to find the message from Rainforest Automation with the subject line “Please confirm Your Registration”. Click the link in the email.
- Enter your email address and password. Click the blue “Submit” bar.
- Click the blue “+ New Gateway” bar.
- Enter the Cloud ID and the Install Code for your **EAGLE™** (these numbers can be found on the Information Label that is on the underside of your device). Click the blue “Add” bar.
- Click the connect icon ().



SEE THE FULL **EAGLE™** USER GUIDE ON OUR WEBSITE:

rainforestautomation.com/eagle_support